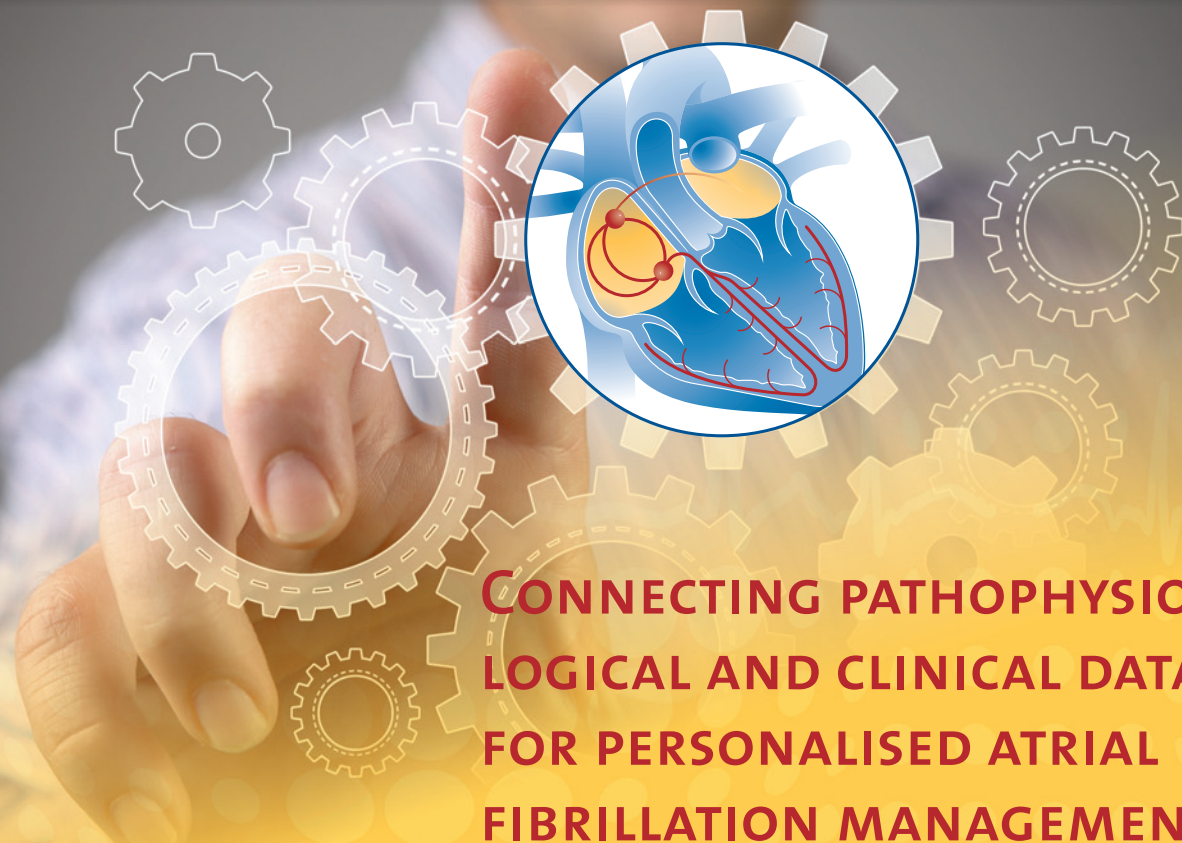




**THE 4TH JOINT CONSENSUS CONFERENCE  
OF THE GERMAN ATRIAL FIBRILLATION NETWORK (AFNET)  
AND THE EUROPEAN HEART RHYTHM ASSOCIATION (EHRA)**



**CONNECTING PATHOPHYSIOLOGICAL AND CLINICAL DATA  
FOR PERSONALISED ATRIAL  
FIBRILLATION MANAGEMENT  
24<sup>TH</sup> - 25<sup>TH</sup> JANUARY 2013**

**CONFERENCE PROGRAM**

# CONFERENCE PROGRAM

## 23<sup>RD</sup> JANUARY 2013, WEDNESDAY EVENING

ARRIVAL, ADJOURN IN THE HOTEL

## 24<sup>TH</sup> JANUARY 2013, THURSDAY

8:20 **Welcome** | Günter Breithardt / Angelo Auricchio

8:30 **Introductory Remarks** | Paulus Kirchhof

### **CARDIOVASCULAR COMPLICATIONS IN ATRIAL FIBRILLATION – AN UPDATE FOR THE 21<sup>ST</sup> CENTURY** (CHAIR: JOHN CAMM)

8:40 **Event rates in current AF populations according to 4P classification** | Hugh Calkins

8:50 **Event rates in current AF populations according to symptoms / EHRA score** | Michael Näbauer

9:00 **Event rates in current AF populations by age and risk scores** | Gregory Lip

9:10 **Outcomes over time in AF patients – when does risk accumulate?** | Ron Pisters

9:20 **Do concomitant cardiovascular conditions promote atrial fibrillation?** | Burkert Pieske

9:30 **Discussion**

9:50 **10 MINUTE “GRAB A COFFEE” BREAK**

### **REAL-LIFE QUESTIONS AND NEW PERSPECTIVES FOR ANTICOAGULANT THERAPY IN AF** (CHAIR: GREGORY LIP)

10:00 **New oral anticoagulants (NOACs) in clinical practice: Answers from a professional organization** | Hein Heidbüchel

10:20 **Predicting bleeding risk from brain imaging – what clinicians should know** | David Werring

10:30 **Silent strokes in AF and during AF ablation: What is their clinical impact?** | Hans-Christoph Diener

10:40 **Anticoagulant therapy after AF ablation – does apparent sinus rhythm change management?** | Gerd Hindricks

10:50 **Discussion**

11:10 **10 MINUTE “GRAB A COFFEE” BREAK**

### **HYBRID THERAPY APPROACHES IN ATRIAL FIBRILLATION** (CHAIR: PAULUS KIRCHHOF)

11:20 **Combination of different antiarrhythmic drugs – rationale and clinical need** | James Reiffel

11:30 **Combination of antiarrhythmic drugs and catheter ablation: When and why?** | Lluís Mont

11:40 **Combination of anticoagulation and LAA occluders: Clinically useful?** | Lucas Boersma

11:50 **Implanted AF monitors – danger or opportunity for atrial fibrillation management?** | Angelo Auricchio

12:00 **Discussion**

12:30 **LUNCH**

## NEW PERSPECTIVES ON AN OLD ARRHYTHMIA (CHAIR: GÜNTER BREITHARDT)

- 13:30 Mechanisms of AF and its perpetuation – does timing of rhythm control matter? | Ulrich Schotten
- 13:50 Making sense of genetic and molecular markers for AF | Stephane Hatem
- 14:10 Discussion

14:30 COFFEE BREAK

## 15:00 BREAK-OUT-SESSION 1

WORK SHOP 1: What really distinguishes AF trial populations and “general” AF patients?

WORK SHOP 2: Are different pathophysiological types of AF helpful to decide on management?

WORK SHOP 3: Genetic, structural and biochemical biomarkers: Picking up signals or palm-reading?

WORK SHOP 4: Can the ECG be used as a tool to personalise AF management?

WORK SHOP 5: Tailoring anticoagulant therapy by stroke risk, bleeding risk, and AF type.

WORK SHOP 6: Acute management of newly diagnosed AF with and without a stroke.

17:15 COFFEE BREAK

17:30 Report of break-out groups to plenary session (10 min per group)

19:00 ADJOURN, DEPARTURE TO DINNER

## 25<sup>TH</sup> JANUARY, FRIDAY

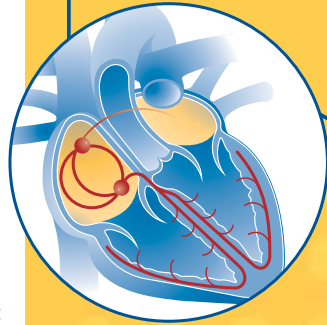
8:30 Kick-off, summary of day 1, targets for the break-out groups for day 2

9:00 **BREAK-OUT-SESSION 2**  
Preparing a written summary of the results

12:00 Final plenary session

14:00 LUNCH, DEPARTURE





## INFORMATION:

### Venue:

The European Heart House  
2035 Route des Colles - Les  
Templiers  
06903 Sophia Antipolis  
France

### Start:

24<sup>th</sup> January 2013  
Thursday, 8 a.m.

### End:

25<sup>th</sup> January 2013  
Friday, 2 p.m.

### Conference organization:

The German Atrial Fibrillation Network (AFNET)  
and the European Heart Rhythm Association (EHRA)

### Scientific organizers:

Prof. Günter Breithardt, Münster, Germany  
Prof. A. John Camm, London, UK  
Prof. Paulus Kirchhof, Birmingham, UK / Münster, Germany  
Prof. Gregory Y. H. Lip, Birmingham, UK

### Contact address:

Angelika Leute PhD  
Communications Manager, AFNET  
Albert-Schweitzer-Campus 1 / Gebäude D11  
Domagkstr. 11, D-48149 Münster  
**Phone** : +49-251-83-45341  
**Mail**: AFConsensus@ukmuenster.de

[www.kompetenznetz-vorhofflimmern.de](http://www.kompetenznetz-vorhofflimmern.de)

SPONSORED BY THE



Federal Ministry  
of Education  
and Research